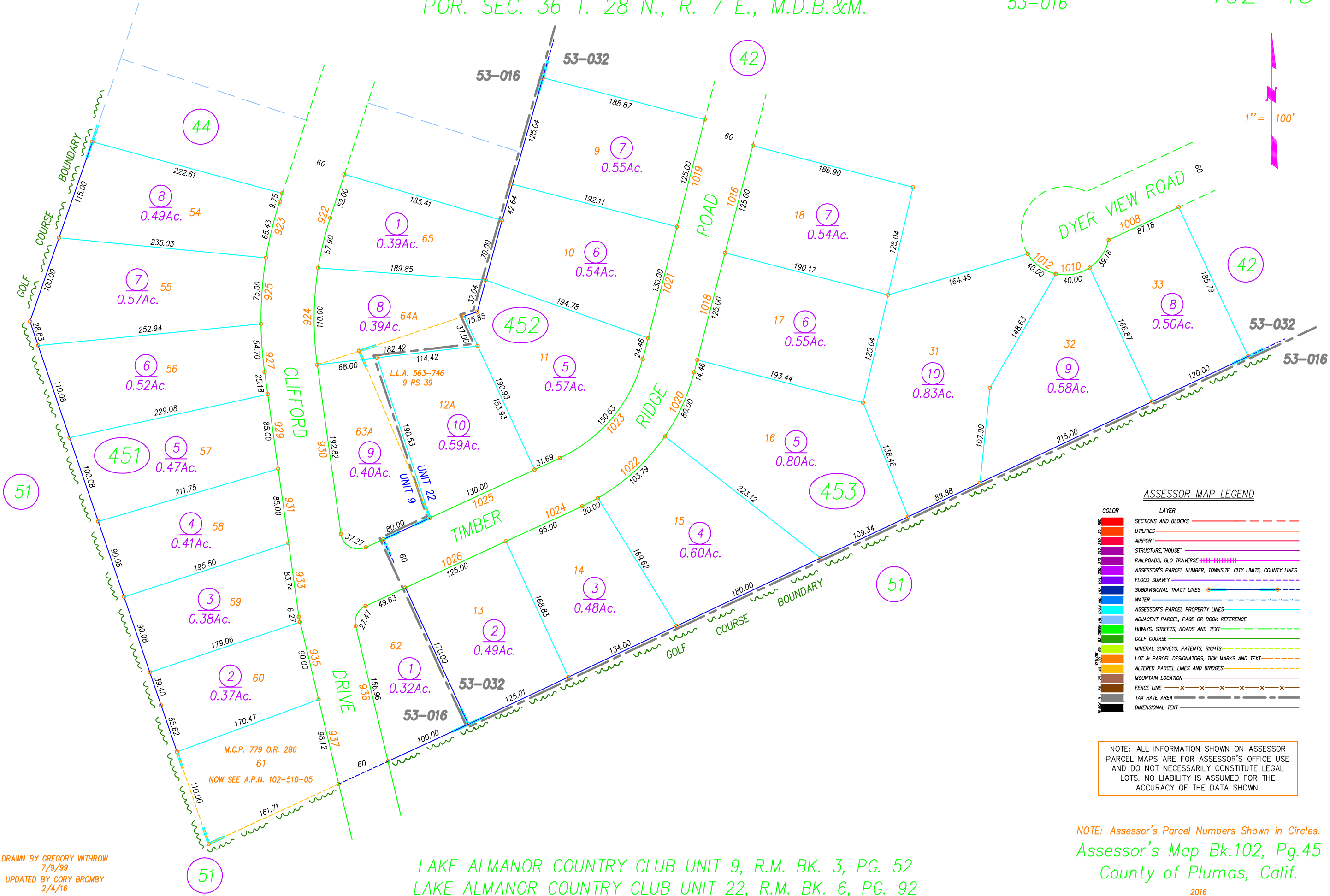


POR. SEC. 25 T. 28 N., R. 7 E., M.D.B.&M.
POR. SEC. 36 T. 28 N., R. 7 E., M.D.B.&M.

Tax Rate Area
53-016

102-45



DRAWN BY GREGORY WITHROW
7/9/99
UPDATED BY CORY BROMBY
2/4/16